

Wakayama Experience Map

Experience type tour of Wakayama and fruit picking

WAKAYAMA



Kansai WIDE Area Pass Five days

Get unlimited unreserved seats of Sanyo Shinkansen and limited express, rapid service, and local trains from Kansai International Airport to Wakayama and other attractive sightseeing spots within the covering area.

Available Area / Train Services

For details, visit <http://www.westjr.co.jp/global/en/ticket/pass/>

Bus

Kansai International Airport ⇄ JR Wakayama Station (Wakayama City) Limousine Bus
 Time required: 40 minutes for a single trip

For details, visit <http://www.kate.co.jp/>

- Wakayama City Area • One-day ticket
- Wakayama Bus
- Sold at the bus sales office in front of JR Wakayama Station and Nankai Wakayamashi Station

- Koyasan Area • One-day ticket
- Nankai Rinkan Bus
- Sold at the bus sales office in front of Nankai Koyasan Station

- Shirahama Area • One-day ticket
- Meiko Bus
- Sold at the bus sales office in front of JR Shirahama Station

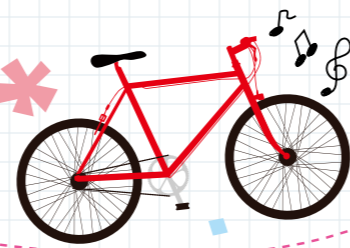


Inquiry
 Tourism Exchange Division, Wakayama Prefectural Government
 1-1 Komatsubara-dori, Wakayama-shi 640-8585 +81-73-441-2789
 E-mail e1005001@pref.wakayama.lg.jp

For sightseeing information on Wakayama Prefecture, visit official tourism website **VISIT WAKAYAMA**.

[Visit Wakayama](#)

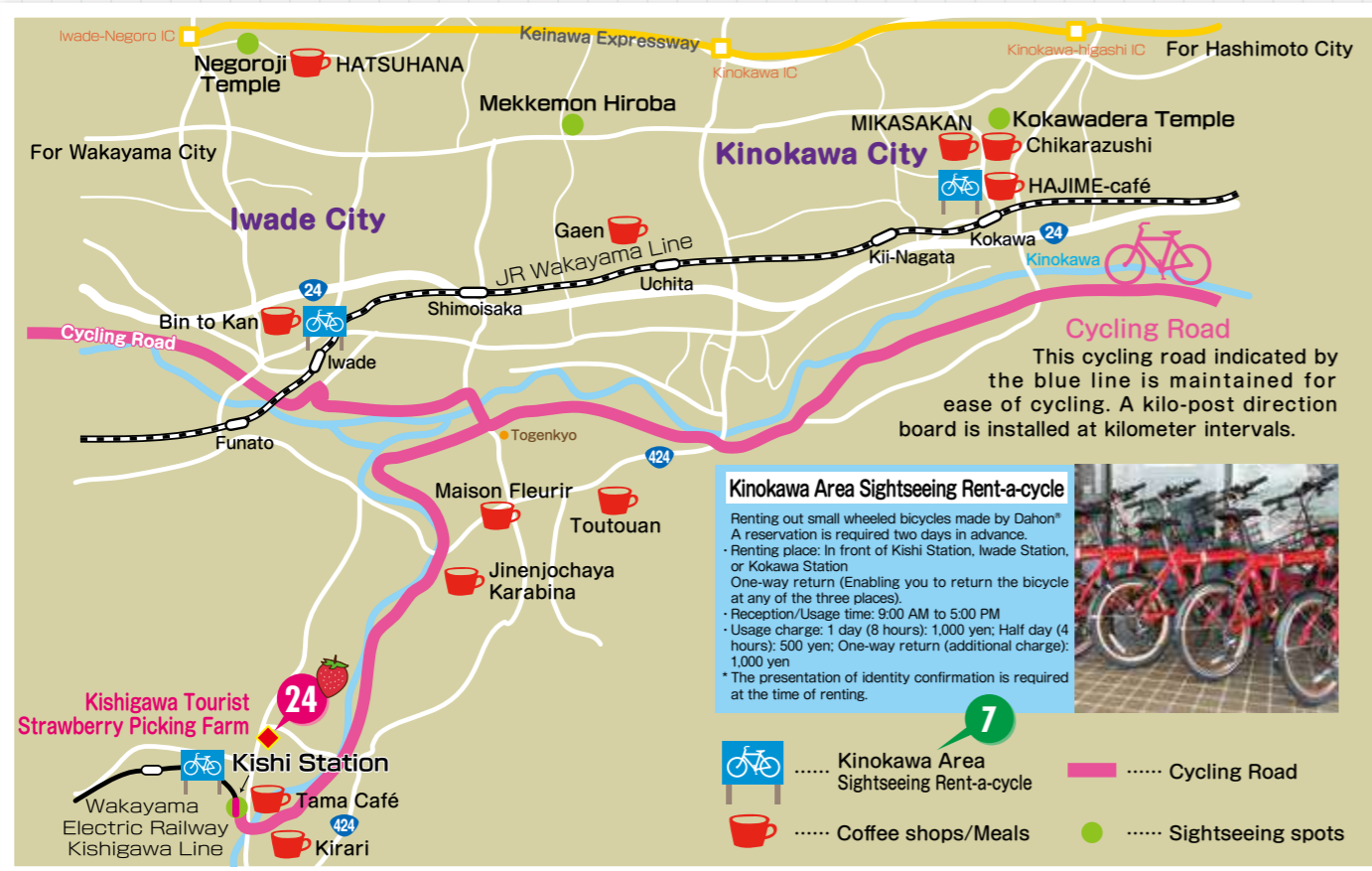
Wakayama's Cycling Road



Kinokawa Cycling

The Kinokawa area in the northern part of Wakayama Prefecture maintains a cycling-dedicated road that extends mainly along the Kinokawa riverbeds. Some restaurants along the road have road bike stands. This dedicated road has few ups and downs, which ensures ease of cycling and makes it possible for cyclists to enjoy a relaxing cycling trip.

Inquiry : Kinokawa Area Tourism Cycling Promotion Council
 Tel. (+81)736-61-0012 E-mail : e1302201@pref.wakayama.lg.jp
 Follow the traffic rules and be aware of the safety of pedestrians when cycling.

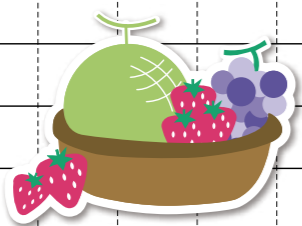


Taste Hunting in Wakayama

Wakayama is endowed with a good climate and various crops are harvested throughout the year. Why do not you experience genuine agriculture with fun?

Fruit Picking Calendar

Month	Jan.	Feb.	Mar.	Apr.	May	June	July	Aug.	Sep.	Oct.	Nov.	Dec.
Strawberry	Early in Jan.					Mid-May						
Blueberry						Early in June		Late in July				
Peach						Late in June		Late in Aug.				
Melon						Late in June		Late in Aug.				
Grape						Mid-July		Late in Oct.				
Persimmon						Mid-Sep.		Early in Dec.				
Citrus fruit in general						(Late in July)		(Mid-Sep.)		Early in Oct.		Late in Dec.



No.	Experience Menu	Operator	Address	Telephone Japanese only +81	Web URL		Acceptance conditions of overseas visitors
					Mail address		
1	SUP (Stand Up Paddle) Boarding School	KAZE	989 Kemi, Wakayama City	073-447-1545	http://www.eonet.ne.jp/~kaze2001/index1.html	kaze2001@gaia.eonet.ne.jp	Eleven years of age or over accompanied by someone who understands Japanese.
2	Patterned Lacquerware Experience	Uruwashi-Kan (Traditional Kishu Lacquerware Industry Center)	222 Funo, Kainan City	073-482-0322	http://www.chuokai-wakayama.or.jp/sikki-k/sikki@flute.ocn.ne.jp		Accompanied by someone who understands Japanese.
3	Umeyu plum liqueur Making Experience	NAKANO BC Co., Ltd.	758-45 Fujishiro, Kainan City	0120-050-609	https://www.nakano-group.co.jp/tour/reserves/plan/en	nakanosakagura@nakano-group.co.jp	Reservation required.
4	Temple Lodging Experience/Sutra Hand Copying/Ajikan Meditation	Koyasan Shukubo Association	600 Koyasan, Koya Town	0736-56-2616	http://eng-shukubo.net/		
5	Sanadahimo Weaving Experience	Sanadahimo Weaving Workshop	1390-1 Kudoyama, Kudoyama Town	0736-54-2019 (Kudoyama-cho Board of Education)			Reservation required. Accompanied by someone who understands Japanese.
6	Japanese sweets making experience	Kanazawa Juo-ken	757 Nagura Koyaguchi-cho Hashimoto City	0736-42-2011	https://juo-ken.com/	kabuki-mono-t@docomo.ne.jp	Up to 5 People Reservation Required
7	Bicycle Rental	Kinokawa Area Tourism Cycling Promotion Council	For more information: https://www.pref.wakayama.lg.jp/prefg/130200/rentalcycle/rentalcycle.html	0736-61-0012	http://www.pref.wakayama.lg.jp/prefg/130200/rentalcycle/rentalcycle.html		Reservation required before at least two days in advance. Pre-adjustments required in case of a reservation of visitors in excess of four.
8	Yuasa Soy Sauce Tour	Yuasa Soy Sauce Co., Ltd.	1464 Yuasa, Yuasa Town	0737-62-2100	https://www.yuasasyouyu.co.jp/yuasa_visit.html	kuyou@yuasasyouyu.co.jp	Six years of age or over Accompanied by someone who understands Japanese. Reservations required for groups.
9	Sea Kayaking	Suhara Seaside House	966-1 Suhara, Yuasa Town	072-840-5644	http://www.mizuasobi.jp/	info@mizuasobi.com	
10	Plum Juice Making	Kishu Umeboshikan	1339 Yamauchi, Minabe Town	0739-72-2151	http://www.umekan.com/	okazaki@umeta.co.jp	Accompanied by someone who understands Japanese.
11	Make Wind Bell with Binchotan	YumeClub	1030-90 Wasa, Hidakagawa Town	0738-70-0531	https://kishutaiken.com/	kumano-travel@tb-kumano.jp	Reservation required.
12	Mandarin Orange Confectionery Making	Akizuno Garten Valencia Field	4558-8 Kamiakizu, Tanabe City	0739-35-1199	http://agarten.jp/	info@agarten.jp	Reservation required.
13	Kumano Kodo Local Guides	KUMANO TRAVEL	1-20 Minato, Tanabe City	0739-26-9025	https://www.kumano-travel.com/	welcome@mi-kumano.com	Reservation required.
14	Agriculture and Forestry Experience/Farmhouse Lodging	Minamikishu Exchange Corporation	306-1 Ago, Shirahama Town	0739-53-0055	http://www.minamikishu.com/	minamikishu@samba.ocn.ne.jp	Accompanied by someone who understands Japanese. Reservation available in Japanese only.
15	Diving Experience	Club Noah Susami	4857-74 Susami, Susami Town	0739-55-4511	http://susami.club-noah.net/	susami@club-noah.net	Reservation required.
16	Walking in Heian Period Costume on Mt. Nachi and Daimonzaka Slope	Daimon-zaka-chaya Teahouse	392-2 Nachisan, Nachikatsuura Town	0735-55-0244	http://www.nachikan.jp/	office@nachikan.jp	Cash payment.
17	Interaction with Dolphins and Whales	Taiji Whale Museum	2934-2 Taiji, Taiji Town	0735-59-2400	https://www.kujirakan.jp/		
18	Koza River Kayaking	Koza Tourist Association	231-3 Nishimukai, Kushimoto Town	0735-72-0645	https://kankou-kushimoto.jp/	kozakankou@gmail.com	Accompanied by someone who understands Japanese.
19	Fishing Kayak	Beach House La Lapin	1587 Kujinokawa, Kushimoto Town	090-3356-8305	https://beachhouse.lapin-kushimoto.com/	info@lapin-kushimoto.com	Reservation required.
20	Tuna Farming Experience	Kushimoto Town Tourism Association	33 Kushimoto, Kushimoto Town	0735-62-3171	http://www.kankou-kushimoto.jp/	info@kankou-kushimoto.jp	Three years of age or over Reservation required. Accompanied by someone who understands Japanese.
21	Handmade Turkish Lamp Experience	Hashigui ICO	1562 Kujinokawa, Kushimoto Town	0735-70-1994	https://hashigui-ico.com/	hashigui.ico@gmail.com	
22	Log Rafting	Kitayama Village Tourist Information Center (Roadside Station Okuturo)	335 Shimoi, Kitayama Village	0735-49-2324	https://it.link/theenclavevillagekitayamawakayama	ikada@kitayamamura.net	Limited to people of 10 to 75 years of age.
23	Canyoning	Outdoor Club Iceman	398 Takehara, Kitayama Village	080-2611-5873	https://oc-iceman.com/	info@oc-iceman.com	Reservation required. Accompanied by someone who understands Japanese.
24	Fruit Picking (Strawberries)	Kishigawa Tourist Strawberry Picking Farm	238 Kodo Kishigawa-cho, Kinokawa City	0736-64-7212	https://www.kanko-kinokawa.jp/view_play/971/		Both individuals and organizations need to make a reservation.
25	Fruit Picking (Peaches, Persimmons, and Mandarin Oranges)	Katsuragi Town Tourist Farms	Katsuragi Town	0736-22-0300	https://www.katsuragi-kanko.jp/fruits/	https://www.katsuragi-kanko.jp/contact/	Please contact us via the address in the left column.
26	Fruit Picking (Grapes and Pears)	Arida Kyoho-grape Village Morien	1054-24 Kawaguchi, Aridagawa Town	0737-32-3843	http://www.budouen.net/	sharaku@luck.ocn.ne.jp	
27	Fruit Picking (Oranges)	Sugai Farm	17 Shinmachi, Miyahara Town, Arida City	0737-88-7005	https://www.tatibanaya.jp/en/stay	info@tatibanaya.jp	Reservation required. Accompanied by someone who understands Japanese.
28	Fruit Picking (Oranges)	Akizuno Sales Store Kitera	1487-1 Kamiakizu, Tanabe City	0739-35-1177	http://www.kiteraga.com/index.html	info@kiteraga.com	Reservation up to 3 PM the previous day.
29	Fruit Picking (Blueberries)	Asai Farm	512 Minamikanaya, Hirogawa Town	0737-62-3873	http://blueberry-asai.konomise.info/index.html	hideki.zz26@ezweb.ne.jp	Reservation required.
30	Fruit Picking (Strawberries, Melons, Peaches, Grapes and Oranges)	Anchin	1745-3 Kanemaki, Hidakagawa Town	0738-22-2964	https://anchin.jp/	anchin@pearl.ocn.ne.jp	Reservation required. Accompanied by someone who understands Japanese.
31	Fruit Picking (Strawberries and Melons)	Kinokuni Farm	1335-4 Ueno, Nada Town, Gobo City	0738-29-3070	http://kinokunifarm.jp/	info@kinokunifarm.jp	Reservation required.
32	Fruit Picking (Strawberries)	strawberry farm Mato kobo	48-1 Taniguchi, Minabe Town	080-1441-3469	https://home.tsuku2.jp/storeDetail.php?scd=0000268597	markkoubou1583@gmail.com	Reservation required.

1 MAPCODE 146 877 221*47

SUP (Stand Up Paddle) Boarding School

SUP lets you "walk on water" while you enjoy views that cannot be seen from land, watch fish swimming underwater, and feel spaciousness that you cannot normally feel.




2 MAPCODE 146 849 773*25

Patterned Lacquerware Experience

A kind lecturer's easy-to-understand explanation will let beginners experience patterned lacquerware without trouble. You can take home the finished lacquerware as a souvenir.




3 MAPCODE 146 819 209*37

Experience Making Umeshu

We have hands-on experience of making your own umeshu (plum wine) using Wakayama's specialty plums. (Reservation required). Also there is a free tour of the Japanese sake and umeshu factory, as well as tastings, and you can also stroll through the beautiful Japanese garden. (Free)




4 MAPCODE 205 460 172*04

Temple Lodging Sutra Copying (Ajikan meditation)

You can stay overnight at temples on Koyasan and experience an ascetic practice, including the traditional breathing method of the Shingon sect as the basis of Ajikan (the meditation method of the Shingon sect) and the copying of the Hannya Shingyo sutra.




5 MAPCODE 205 727 439*05

Sanadahimo Weaving Experience

Sanadahimo is a narrow, ribbon-like textile made on a loom. Sanada Yukimura, one of the most famous Samurai warriors developed sanadahimo (a braid) in Kudoyama. This braid is used for sword hilts. You can weave your own sanadahimo here. It can be made into a cell phone strap or other goods for you to take home.




6 MAPCODE 205 786 292*70

Japanese sweets making experience

Experience making Japanese sweets in a retro space of a traditional Japanese sweets shop with a history of 110 years. After the experience, please enjoy your own seasonal raw confectionery and dorayaki with organic matcha (green tea).




8 MAPCODE 146 397 620*52

Yuasa Soy Sauce Brewery Tour



You can see soy sauce barrels and the process of squeezing soy sauce through windows during the factory tour. You can see and touch a barrel that is approximately 100 years old. You can taste soy sauce as well.




9 MAPCODE 146 397 620*52

Sea Kayak

You can see the horizontal line, strangely shaped rocks, and an uninhabited island from the beautiful sea. You can relax and spend time at sea, where you will feel as if you were in a different world apart from everyday life.

11 MAPCODE 302 504 160*67

Make Wind Bell with Binchotan

You can make "Wind bell with Binchotan Charcoal" which representative Wakayama's Specialty products. It will bemade beatfulsounds.




12 MAPCODE 184 319 275*86

Mandarin Orange Confectionery Making

Akizuno is an area where citrus fruit can be harvested all year round. You will experience making jam and sweets, such as roll cakes, from freshly picked mandarin oranges.




15 MAPCODE 457 163 410*54

Diving

Even beginners can enjoy diving in a calm sea without waves. Japan's only one underwater mailbox exists here, where you can drop a postcard.




16 MAPCODE 246 003 127*33


Heian period Costume Experience

You can rent costumes of the Heian period (794-1185) and walk around Kumano Kodo Daimon-zaka Slope and the Nachi Water Falls.



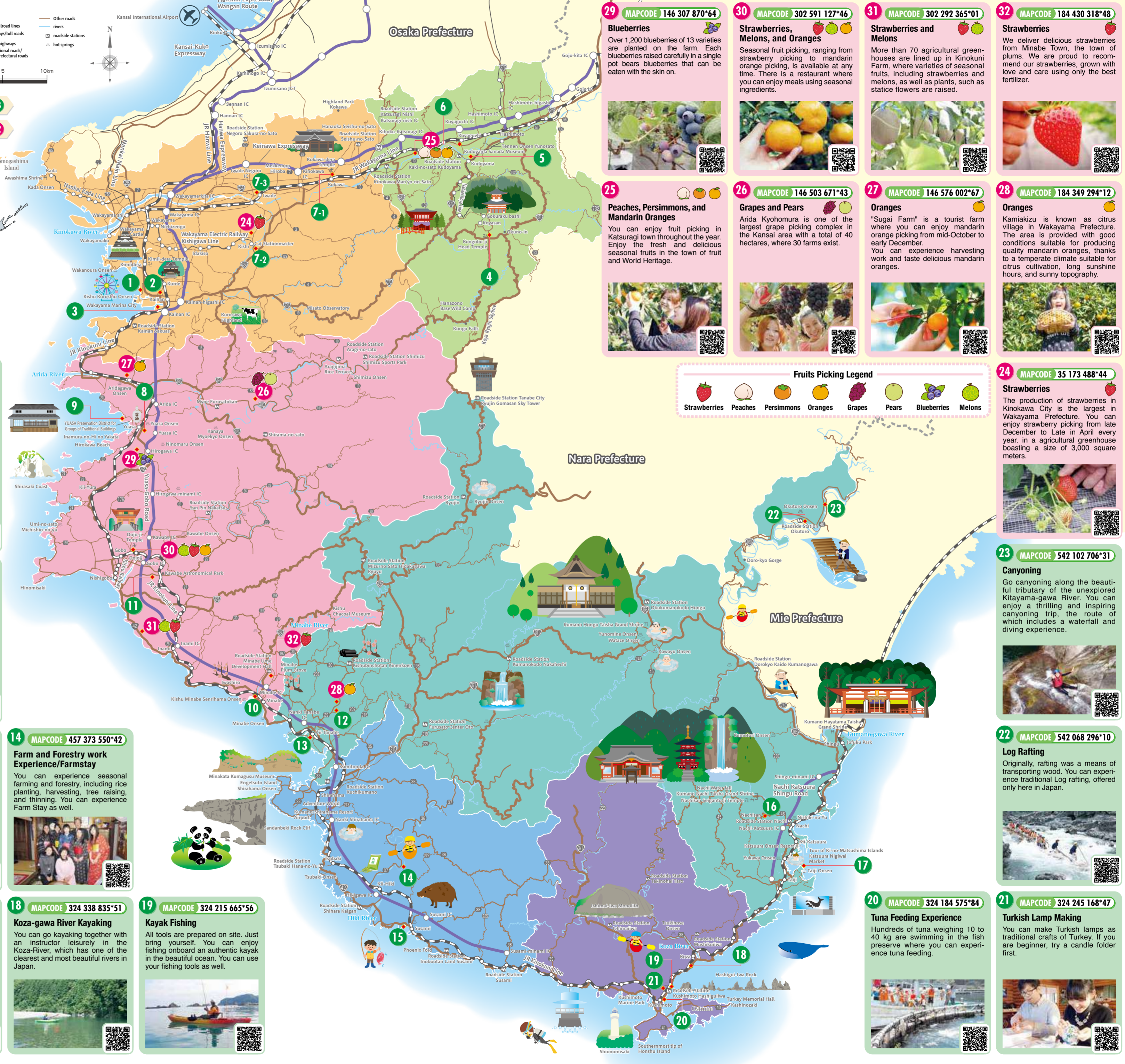

Legend

- JR lines
- private railroad lines
- expressways/toll roads
- rivers
- national highway
- major regional roads/ general prefectural roads
- Other roads
- rivers
- roadside stations
- hot springs



Experience 1 ~ 23

Fruits Picking 24 ~ 32



29 MAPCODE 146 307 870*64

Blueberries

Over 1,200 blueberries of 13 varieties are planted on the farm. Each blueberry raised carefully in a single pot bears blueberries that can be eaten with the skin on.




30 MAPCODE 302 591 127*46

Strawberries, Melons, and Oranges

Seasonal fruit picking, ranging from strawberry picking to mandarin orange picking, is available at any time. There is a restaurant where you can enjoy meals using seasonal ingredients.




31 MAPCODE 302 292 365*01

Strawberries and Melons



More than 70 agricultural greenhouses are lined up in Kinokuni Farm, where varieties of seasonal fruits, including strawberries and melons, as well as plants, such as statice flowers are raised.




32 MAPCODE 184 430 318*48

Strawberries

We deliver delicious strawberries from Minabe Town, the town of plums. We are proud to recommend our strawberries, grown with love and care using only the best fertilizer.

25 MAPCODE 146 503 671*43

Peaches, Persimmons, and Mandarin Oranges

You can enjoy fruit picking in Katsuragi town throughout the year. Enjoy the fresh and delicious seasonal fruits in the town of fruit and World Heritage.




26 MAPCODE 146 503 671*43

Grapes and Pears

Arida Kyohomura is one of the largest grape picking complex in the Kansai area with a total of 40 hectares, where 30 farms exist.




27 MAPCODE 146 576 002*67

Oranges



"Sugai Farm" is a tourist farm where you can enjoy mandarin orange picking from mid-October to early December. You can experience harvesting work and taste delicious mandarin oranges.




28 MAPCODE 184 349 294*12

Oranges

Kamiakizu is known as citrus village in Wakayama Prefecture. The area is provided with good conditions suitable for producing quality mandarin oranges, thanks to a temperate climate suitable for citrus cultivation, long sunshine hours, and sunny topography.

Fruits Picking Legend

- Strawberries
- Peaches
- Persimmons
- Oranges
- Grapes
- Pears
- Blueberries
- Melons

24 MAPCODE 35 173 488*44

Strawberries



The production of strawberries in Kinokawa City is the largest in Wakayama Prefecture. You can enjoy strawberry picking from late December to Late in April every year. in a agricultural greenhouse boasting a size of 3,000 square meters.




23 MAPCODE 542 102 706*31

Canioning


Go canioning along the beautiful tributary of the unexplored Kitayama-gawa River. You can enjoy a thrilling and inspiring canioning trip, the route of which includes a waterfall and diving experience.

22 MAPCODE 542 068 296*10

Log Rafting



Originally, rafting was a means of transporting wood. You can experience traditional Log rafting, offered only here in Japan.




20 MAPCODE 324 184 575*84

Tuna Feeding Experience

Hundreds of tuna weighing 10 to 40 kg are swimming in the fish preserve where you can experience tuna feeding.

21 MAPCODE 324 245 168*47

Turkish Lamp Making

You can make Turkish lamps as traditional crafts of Turkey. If you are beginner, try a candle folder first.

