

Wakayama Prefecture Educational Fieldtrip Guidance

Wakayama Prefecture

Don't you want to change the
normal fieldtrip?

“Acquire the power to think!!” -the fieldtrip you will experience in Wakayama-



① Looking into the future of resource management - Natural and Cultivated Tuna-



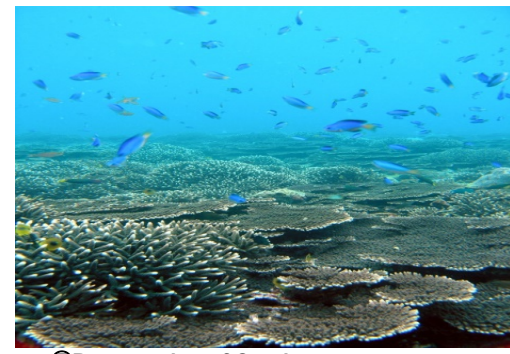
② Learning about disaster prevention (Tsunami and Landslide)



③ Learning the Meaning of “heart” from Kushimoto and their friendship with Turkey



④: World Heritage Site “Kumano Kodo” Preservation



⑤ Preservation of Corals ~To Save Our Precious Ocean~



⑥ Japan Heritage “Living Together with Whales”



⑦ Globally Important Agricultural Heritage Systems (Minabe - Tanabe Ume System)



⑧ NANKIKUMANO GEOPARK ~Feel the Earth, Get to Know the Blessing of Life ~



⑨ Learning the Power of Thinking through the Culture of Food

Theme① : Looking into the future of resource management -Natural and Cultivated Tuna-



Tour in the Tuna Market



Experiencing Tuna Farm Raising

What is there to learn?

- You can experience the actual auction.
- You can learn about the fishing method, how tuna fishery should be operated, and the production process until it goes to your table.
- You can learn about the process of complete farm raising of tuna, how it is done and after learning about it, you will go to the fish tank by boat and experience feeding the tuna.
- You can learn about the environment and food education through the Tuna resource management in Nachikatsuura Town, which has the **Japan's no.1 fresh Tuna catch port**, and in Kushimoto Town where Kindai University which succeeded in the **complete aquaculture technology for the first time in the world** is located.

Resource Management of Bluefin Tuna

- Bluefin tuna has a fish restriction due to decreasing resources.
- Japan is the biggest fishing nation and the largest consumer of Bluefin Tuna.
- While there is a fear of extinction of natural tuna, in the year 2002, Kindai university successfully completed the aquaculture technology. While doing this, experimenting for the future of Tuna is ongoing.

Theme② : Learning about disaster prevention (Tsunami and Landslide)



Inamura-no-Hi-no Yakata Museum



Landslide Disaster Education Center

What is there to learn?

- In Inamura-no-Hi-no Yakata Museum, you will learn from the curator about the disaster prevention pioneer, Goryo Hamaguchi, and the disaster prevention in Japan.
- In the Landslide Disaster Education Center, you will learn from the staff about how landslide prevention technology is protecting the land of Japan.
- **The museum's and the education center's specializations are on providing information about tsunamis and landslides, respectively.** In these places, you can learn what you can do to prepare for future disasters.

World Tsunami Awareness Day

- In 2015, the 5th of November was designated by the United Nations as the *World Tsunami Awareness Day*. During an 1854 earthquake and tsunami, Goryo Hamaguchi set fire to his entire harvest to warn villagers and led them to high ground, saving their lives.

Theme③ : Learning the Meaning of “heart” from Kushimoto and their friendship with Turkey



Story

- In 1890, after an audience with the Meiji Emperor, the Turkish Warship Ertuğrul was on the way back home when it was hit by a big storm off Kushimoto. Unfortunately, 580 Turkish died in the storm. Local people helped them devotedly and saved 69 Turkish.
- 100 years later, during the war between Iraq and Iran, Japanese citizens trapped in Iran were saved by Turkish aircraft.

What is there to learn?

- You can learn how important it is to care for others by going through the history of Japan and Turkish friendship on a guided tour.
- [Recommended before the tour] Japan-Turkey joint movie “Kainan1890” (Aired Dec.2015)

Theme④: UNESCO World Heritage Site “Kumano Kodo” Preservation



before



During repairs



after

What is there to learn?

- The only heritage site in Japan where people help the preservation hands-on
- Learn about history and the environment through preservation activities.

Related plans that work in synergy

- Walk the ancient road (with guide), Visit three grand shrines and World Heritage Center.

What is world heritage?

It is an irreplaceable treasure, created by the creation of the earth and history of mankind and passed on from the past to present. It is a common heritage that everyone living now must pass on to future generations.

What is Kumano Kodo Pilgrimage Routes?

Known from times past as “Ari no Kumano-mode”(ant’s pilgrimages to the Kumano) because of the hordes of people who walked it, and Kumano is said to be the starting point of journey.

Theme⑤ : Preservation of Corals~To Save Our Precious Ocean~



Sea of Coral Table

Experience Taking care of the animals in the Aquarium

What is there to learn?

- Learn about the Kushimoto sea creatures and the bounties of Kuroshio(Black Current) from the keepers at Kushimoto Marine Park
- Learning about breeding of the sea turtles, extermination of crown-thorn starfish eating coral **and activities to preserve our beautiful ocean.**
- In the hands-on aquarium breeding experience, experience real contact with the creatures in Kushimoto sea through while learning the importance of living creatures and protecting resources.

Other Hands-on Experience

- Hands-on aquarium breeding experience, Snorkeling

What is Ramsar Convention?

- A convention originally made to preserve wetland habitat for migratory waterbirds. And now, it is also for the preservation of valuable corals such as Okinawa's Kerama Island's coral reef.
- The Kushimoto sea is known as the most northerly sea in the world to have a large coral reef.

Theme⑥ : Japan Heritage “Living Together with Whales”



Whale Museum



Whale contact experience

What is there to learn?

- In Taiji Whale Museum, you can learn about whale's ecology and the history of whaling from the staff such as veterinarians, curators and animal keepers.
- The Whale Museum is the only museum in Japan where you can **experience direct contact with whales**
- You can learn about coexisting with animals by swimming with the whales and feeding them.
- You can see a rare white whale and experience a contact with it

What is Japan Heritage ?

▪ It is designated by Agency Cultural Affairs to show our nations' culture and tradition through the region's historical appeal and characteristics.

Thinking about whale fishing from the old times

▪ You will be able to understand the background of whale fishing which started from the early stages of the Edo Era(1603 – 1868) and has now become an industry to support the community.

Theme⑦ : Globally Important Agricultural Heritage Systems (Minabe - Tanabe Ume System)

Coal production



Wood fuel forest

- Continuously managing wood fuel forests
- Making "Kishu Binchotan (traditional charcoal)

biodiversity



Ume-plum production



- The usage of Satoyama (cultivated countryside) where there are many slopes
- Various genetic resources and breeding
- Superb traditional technology

Ume Farm

Ume Processing



Employment creation



Umeboshi making experience

What is there to learn?

- Learning Ume production from the Japan Agricultural Cooperatives Kishu stuff or producers themselves.
- In the Ume Museum, you will learn about Ume's history from the staff, by using panoramic models of the Ume orchard and various other kinds of exhibit.
- Learning Ume production by experiencing the actual process.

Other Activities

- Umeboshi (pickled Ume-plums) making experience, Ume jam making experience.

What is Globally Important Agricultural Heritage Systems?

- An area (site) that is certified with important agriculture (including forest and fish industry), biodiversity, and agricultural landscape by Food and Agriculture Organization of the United Nations.

What is Minabe – Tanabe Ume system?

- It is an agricultural system that has been used for 400 years which sustainably has been producing high quality Ume. Even though there are many slopes that are poor in nutrients and that are easily crumbled due to gravels, they have made the most of them.

Theme⑧ : NANKIKUMANO GEOPARK ~Feel the Earth, Get to Know the Blessings of Life ~



Ichimai-iwa Monolith



Nachi Waterfall



Engetsuto Island

What is there to learn?

- Local tour guides will give you a fun talk about these natural formations and other landscapes found in the area, as well as about how people live their lives.
- You can learn about how these landscapes influence everyday life, through, for instance, the hot springs which are considered as one of earth's bounties, and discover the origin of the earth and nature worship.

Other activities

Geosite Tour, canoeing, trekking, and so on.

What is a Geopark?

An area which allows you to look through its geological features, and feel the earth and its blessings while learning something from it.

What is Nankikumano Geopark ?

You can experience the culture and the precious nature by observing extraordinary landscapes, a wide variety of plants and animals brought by a warm climate, and the Kumano faith, which is strongly related to nature worship; and by discovering how rafting areas are naturally formed.

Theme⑨ : Learning the Power of Thinking through the Culture of Food



Yuasa, the birthplace of Japanese soy sauce



Fruit tree test center



During the interview

What is there to learn?

- You can learn problem solving through experiencing producing an everyday food and by doing fieldwork.
- Wakayama supports Japan's food culture. It is the birthplace of Japanese soy sauce, katsuobushi (dried bonito), and wasabi (Japanese horse radish). It is also a land of fruits, the biggest producer of Ume-plums, mandarin oranges, persimmons in Japan.

Enjoy these extraordinary experiences!



Shirasaki cruising



Bluefin Tuna Market Tour



Making of Umeboshi (pickled Ume-plums)



Experience river canoeing



Snorkeling



Experience working on Kinshu Binchotan (traditional charcoal)

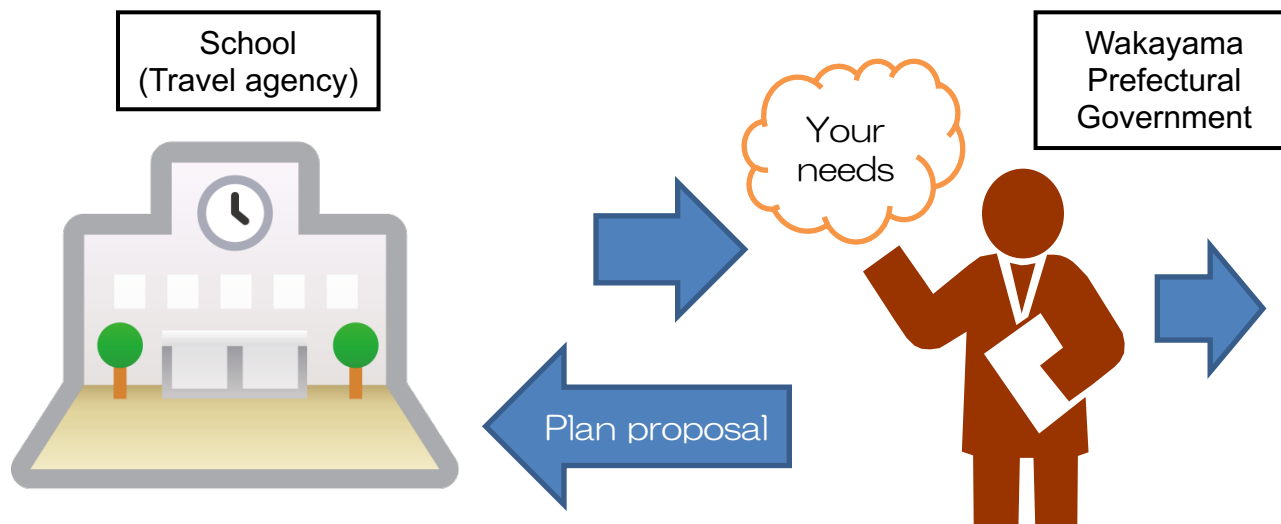
Wakayama's support for fieldtrips

1. We give proposals and advice for a trip plan to match your fieldtrip schedule
2. Attending and supporting the FAM trip
(※there is a limit to available monetary support)
3. Advance learning support
(visiting the school to explain details of the fieldtrip)
4. We offer brochures and novelties.
(e.g. mini towels, paper bags, etc.)

We will offer you plans that fit your curriculums!

We provide hospitality that comes from our hearts for each and every school.

Have an unforgettable fieldtrip experience!



You can order to fit any event that your school has!

Orientation, study camp, outdoor activities, and many other events.
Please contact us at Wakayama Tourism Exchange Division.

Inquiries

Tourism Exchange Division, Wakayama Prefectural Government
1-1, Komatsubara-dori, Wakayama city, Wakayama, 640-8585, Japan
Tel:+81-73-441-2785
Email: e0625001@pref.wakayama.lg.jp